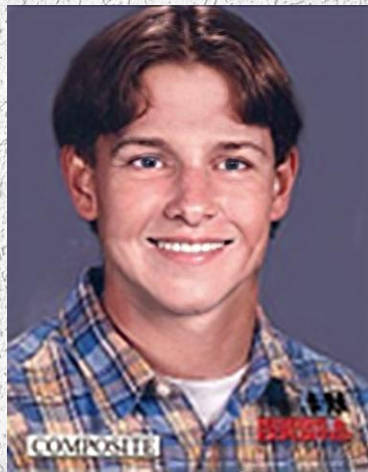




PIMA COUNTY SHERIFF'S DEPARTMENT

COLD CASE INFORMATION

CASE # 081115419



Victim: Kristopher Loesch (AKA Kristopher Hanson)

On November 15, 2008, Skye Hanson and Tine Loesch were wanted to homicide charges in Idaho and had been living at an address on west Daviti Lane for about seven years. The couple was featured on "American Most Wanted" T.V. program that evening. The couple had apparently formed a suicide pact fearing arrest. The two women were found in a vehicle along the side of the road. suicide notes were found in the vehicle. Kristopher Loesch was Tina's son. Kristopher was living with Loesch and Hanson prior to their deaths. Kristopher is still missing to this day.

If you have information regarding this case please contact us by using the form online, email, or calling (520) 351-1111.